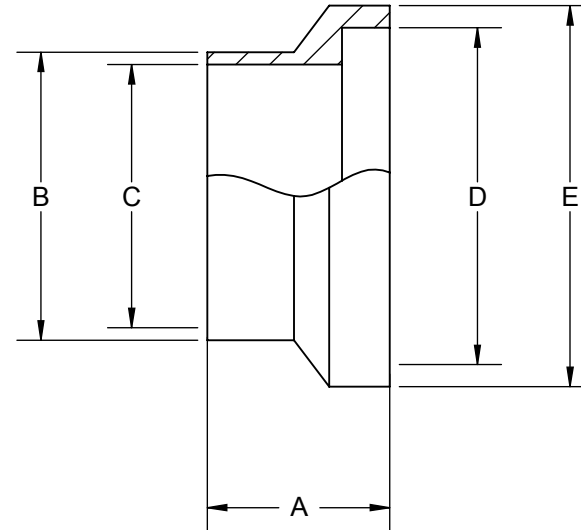
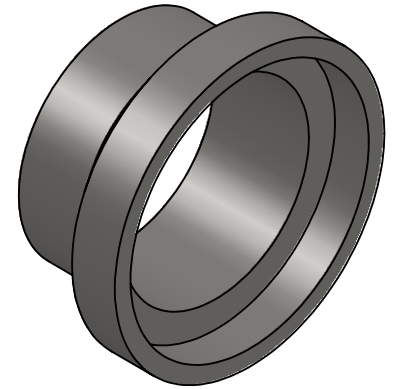
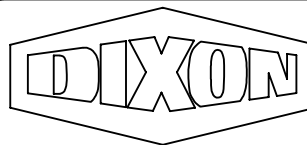


SIZE	A	B	C	D	E
1" - IN	0.785	1.000	0.870	1.265	1.985
1" - MM	19.94	25.40	22.10	32.13	50.42
1.5" - IN	0.950	1.500	1.370	1.755	1.985
1.5" - MM	24.13	38.10	34.80	44.58	50.42
2" - IN	1.040	2.000	1.870	2.255	2.640
2" - MM	26.42	50.80	47.50	57.28	67.06
2.5" - IN	1.160	2.500	2.370	2.755	3.307
2.5" - MM	29.46	63.50	60.20	69.98	84.00
3" - IN	1.220	3.000	2.870	3.315	3.870
3" - MM	30.99	76.20	72.90	84.20	98.30
4" - IN	1.350	4.000	3.834	4.315	4.870
4" - MM	34.29	101.60	97.38	109.60	123.70
6" - IN	1.125	6.000	5.782	6.919	7.495
6" - MM	28.58	152.40	146.86	175.74	190.37
8" - IN	1.125	8.000	7.782	8.919	9.495
8" - MM	28.58	203.20	197.66	226.54	241.17



FINISH ON ALL
POLISHED OR
MACHINED
SURFACES
TO BE 32 Ra
MAXIMUM UNLESS
OTHERWISE
SPECIFIED



The Right Connection™

DIXON SANITARY

N25 W23040 PAUL RD
PEWAUKEE, WI 53072
(800) 789-1718

THIS DRAWING AND THE INFORMATION CONTAINED THERE ON
IS THE EXCLUSIVE PROPERTY OF DIXON SANITARY AND MAY NOT
BE COPIED OR MODIFIED WITHOUT OBTAINING WRITTEN PERMISSION

SIZE:
A

PART NUMBER:
15WI

DESCRIPTION:

DRAWN BY: MR
DATE: 6/14/2017

MATERIAL:

SCALE: 1:1

SHEET: 1 OF 1